

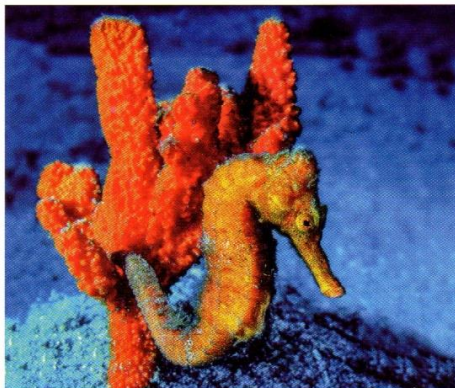
## EXTRAORDINARY DIVING

Discover more secrets at  
[www.bvitourism.com](http://www.bvitourism.com) or call +33 7 64 09 16 64



## TOP 10 DIVE SITES

1. THE CATHEDRAL
2. THE PLAYGROUND
3. ANGELFISH REEF
4. PAINTED WALLS
5. RMS RHONE
6. WRECK ALLEY
7. GINGER STEPS
8. FLINTSTONES
9. WEST SEAL DOG
10. CHIKUZEN



### EXPLORE THE SECRETS THAT LIE BELOW THE SURFACE!

Break the surface of the British Virgin Islands' surrounding seas to discover nature's secrets among countless reefs, towering coral pinnacles, underwater caves, canyons, massive boulders and grottoes.

The BVI's more than 200 spectacular dive sites range from shallows for the novice snorkeler to dramatic sea caverns and shipwrecks for the experienced scuba enthusiast. Dive tour guides are always available to lead swimmers to the best sites for each skill level. For more information about diving in the BVI visit [www.bvitourism.com/diving](http://www.bvitourism.com/diving)

Cooper Island | Dead Chest | Ginger Island | Green Cay | Jost Van Dyke | Norman Island | Salt Island | Virgin Gorda | The Dogs

## TOP 10 DIVE SITES

### RMS Rhone - Marine Park (CONTINUED)

#### ISLAND: SALT ISLAND

of 1867 with 125 persons on board. At 310 feet long and 40 feet wide, the wreck of the Royal Mail Steamer lies in two main parts in waters between 25 and 90 feet deep. Much of it is still intact and visible, including decking, parts of the rigging, the steam engine, and propeller. The Marine Park stretches from Lee Bay on Salt Island westward to include Dead Chest Island. The ship's anchor broke away outside Great Harbour, Peter Island, and this site forms the second portion of the Park.  
*Depth Range: 30 to 90 feet*

### Wreck Alley (Marie L, Pat, and Beata)

#### ISLAND: COOPER ISLAND

This triple wreck site consists of the Marie L, a cargo boat intentionally sunk in the early 1990s, the Pat, a tugboat sunk a few years later that now lies up against the Marie L, and the Beata, sunk in 2001. Many fish use the wrecks for shelter including large barracuda and moray eels. Southern rays often hide in the sand and reef sharks have been seen. Usually calm.  
*Depth Range: 60 to 90 feet*

### Ginger Steps

#### ISLAND: GINGER ISLAND

This site comprised of ledges "stepping" down to 100 ft. Generally the visibility is good and the sun reflects from the white sand between the drop offs giving amazing colour to the scene. Juvenile angel fish, fairy basslets and damsel fish play amongst the coral heads. Snappers, squirrel fish, and grunts are abundant.

### Flintstones

#### ISLAND: WEST DOG

Located west of the northern tip of West Dog, the site is protected from the easterly seas by Virgin Gorda and West Dog. This site is excellent when there is no north swell and there is rarely any current on the site. It is named for its similarity to the town of Bedrock, you will find house sized boulders and a soft coral garden.  
*Depth Range: 60ft*



## TOP 10 DIVE SITES

### The Cathedral

ISLAND: JOST VAN DYKE

The Cathedral is named for a magnificent, high-ceiling cavern illuminated by light rays streaming through an opening above. The site also includes huge rocks and boulders that have tumbled from Jost, continuing as rugged terrain underwater. The west tip of Jost is exposed to the Atlantic Ocean. It is not unusual to find pelagics here, sharks, tuna, and occasionally a pod of bottlenose dolphin.

Depth Range: 40ft.

### The Playground

ISLAND: GREEN CAY

Comprised of large rocks and coral heads in deepwater, often pelagics can be seen including manta rays, reef and nurse sharks, eagle rays and tarpon. Watch for parrot fish and the small red lip blenny. Occasional current and heavy swell.

Depth Range: 30 to 90 feet

### Angelfish Reef

ISLAND: NORMAN ISLAND

This mixture of reef and sand with ridges creates narrow canyons where an abundance of fish including yellow head jaw fish, sailfin blennies, angelfish and sea horses hiding in the gorgonia can be found. Rays can also be seen and the occasional turtle. High hats, jack-knives and spotted drums can be seen together. Large swells and currents. Good for photography.

Depth Range: 10 to 90 feet

### Painted Walls

ISLAND: DEAD CHEST

A series of underwater canyons and reef systems that rise from an average depth of 30 feet. At the terminus of the 3rd canyon are two arches covered with encrusting sponges in an artist's palate of colour... and thus the name. Expect to see green turtles, octopus and the elusive frogfish.

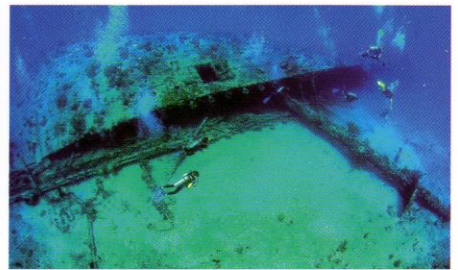
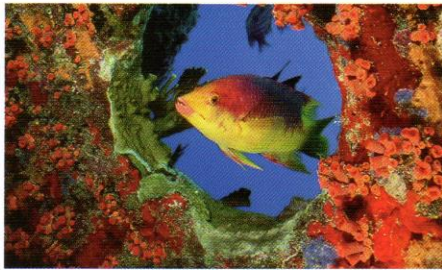
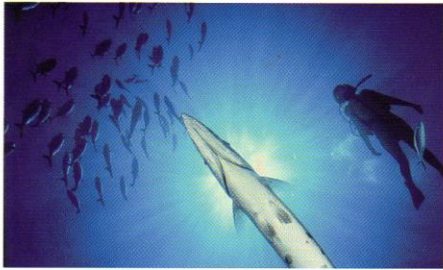
Depth Range: 30 to 50 feet

### RMS Rhone - Marine Park

ISLAND: SALT ISLAND

The Wreck of the Rhone is the first and only Marine National Park in the British Virgin Islands. It is the most celebrated dive site in the BVI, and a major recreational attraction. The park includes examples of fringing reef habitat and sea grass beds. The wreck is that of a Royal Mail Steamer which sunk during the hurricane

(continued on next page)



Cooper Island | Dead Chest | Ginger Island | Green Cay | Jost Van Dyke | Norman Island | Salt Island | Virgin Gorda | The Dogs

## TOP 10 DIVE SITES

### Seal Dog

ISLAND: WEST SEAL DOG

Large boulders covered in hard and soft corals create many ledges, canyons, and swim throughs. Set in the Atlantic side of the islands, many pelagics are to be found including eagle rays, king fish, mackerel, and the occasional shark. Occasional current and heavy swells.

Depth Range: 20 to 80 feet

### The Chikuzen

ISLAND: VIRGIN GORDA

Considered to be one of the best dives in the BVI, due to its remote location, this site should only be attempted with experienced dive instructors. The Chikuzen, a 246-foot refrigeration vessel originally built in Japan, was part of the fishing fleet in St Maarten. Situated 12 miles NE of Virgin Gorda surrounded by miles of sand, this is the only place for marine life to congregate. Regular visitors include schooling barracuda, horse-eye jacks and snappers, stingrays, eagle rays, African pompano, atlantic spadefish, nurse sharks, and blacktip reef sharks, along with a resident 600 lb. goliath grouper. This is a challenging site due to regular swells in the three to five foot range, please check for current conditions.

Depth Range: 40 to 75 feet

## GETTING HERE

### ACCESS BY AIR

Connecting airports surround the BVI, making arrivals and departures an easy part of your travel journey. There is no non-stop service to the BVI. However visitors can fly to San Juan (SJU), St. Thomas (STT), Antigua (ANU) and St. Maarten (SXM) with connections to Beef Island (EIS) and Virgin Gorda (VIJ).

All flights must connect through the following:  
Luis Munoz Marin International (SJU) San Juan, Puerto Rico  
Cyril E. King International (STT), St. Thomas, USVI  
Princess Juliana International Airport (SXM) St. Maarten  
Lester Bird International (ANU), Antigua

For more information visit: [www.bvitourism.com/arriving-air](http://www.bvitourism.com/arriving-air)

**ESCUBA**  
THE BVI TOURISM AUTHORITY

